



AH37

Regional Tire for Extreme Mileage & Fuel Efficiency
Approved for SmartWay & CARB



AH37

Structurally Designed for Longer Tread Life, Fuel Efficiency, and Durability

Belt structure

Minimized motion of belts allows for reduced heat generation.

Carcass

Optimized carcass structure allows for better ride and handling.



Improved bead

Optimized bead profile allows for superior retreadability.

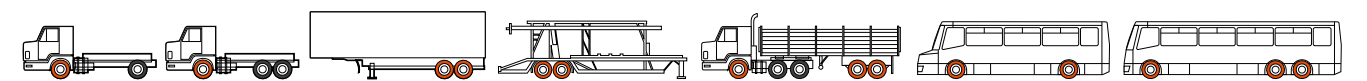
Sizes & Specifications

AH37

S-code	Size	Ply Rating	Type	Measuring Rim	Max. Air (psi)		Max. Load (lbs)		Overall Diameter (inch)	Section Width (inch)	Tread Width (inch)	Tread Depth (inch/32nds)	Revs /Mile	SLR (inch)	Max Speed	Weight (lbs)
					S	D	S	D								
3002448	10R22.5	14	T/L	7.50	115	115	5,675	5,355	40.0	10.0	7.6	16	506	20.0	75	138
3002162	11R22.5	14	T/L	8.25	105	105	6,175	5,840	41.5	11.1	8.3	20	487	19.4	75	122
3002163	11R22.5	16	T/L	8.25	120	120	6,610	6,005	41.5	11.1	8.3	20	487	19.4	75	122
3002444	11R24.5	14	T/L	8.25	105	105	6,610	6,005	43.5	11.1	8.3	20	464	20.3	75	129
3002445	11R24.5	16	T/L	8.25	120	120	7,160	6,610	43.5	11.1	8.3	20	464	20.3	75	129
3002449	12R22.5	16	T/L	9.00	120	120	7,390	6,780	42.7	12.0	8.5	19	473	19.8	75	138
3002450	255/70R22.5	16	T/L	7.50	120	120	5,510	5,070	36.7	10.0	7.8	18	550	17.1	75	94
3002452	275/70R22.5	18	T/L	8.25	131	131	6,940	6,395	37.9	11.0	8.9	19	534	17.6	75	109
3002446	295/75R22.5	14	T/L	8.25	110	110	6,175	5,675	40.3	11.5	8.3	20	502	18.7	75	116
3002512	295/75R22.5	16	T/L	8.25	120	120	6,610	6,005	40.3	11.5	8.3	20	502	18.7	75	116
3002447	285/75R24.5	14	T/L	8.25	110	110	6,175	5,675	41.5	11.3	8.3	20	487	19.4	75	123

* Tire construction and material specifications subject to change without notice or obligation.

Recommended Vehicle Types & Position



Recommended position

hankooktire.com/us



Hankook Tire America Headquarters

333 Commerce Street, Nashville, Suite 600, Tennessee 37201, USA
Tel : 1-800-HANKOOK, Fax : 1-800-TIRES-OK

Structurally Designed for Longer Tread Life, Fuel Efficiency, and Durability



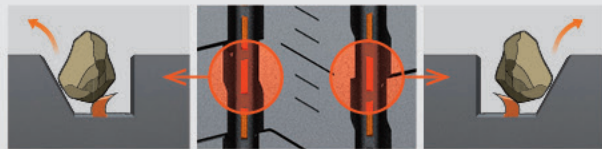
Significant Design Features

A Multi-purpose performance



Combination of center zig-zag grooves and 3D kerf provides better traction, increased mileage and reduced irregular wear.

B Stone ejector



Helps eject stones and protect against stone drilling.

C Zigzag traction groove



Improves traction and braking performance by expanding the point of intersection through four zigzag grooves with 3D kerf.

D Optimized shoulder design



Optimized shoulder profile and unique shoulder wall grooves help deliver excellent resistance to uneven rib wear.

E Optimized footprint

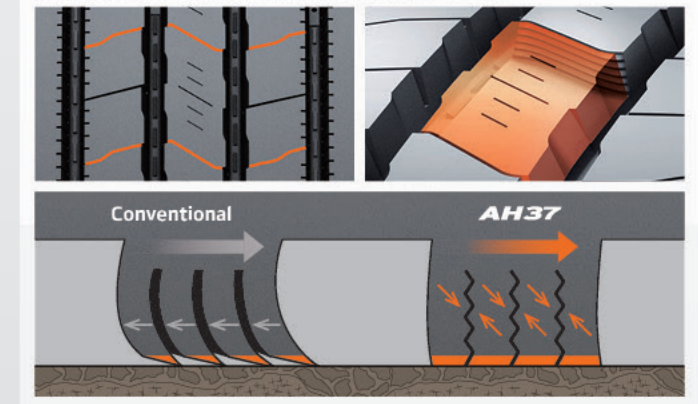
Helps prevent separation, improve traction and mileage performance.



Technology and Benefits

F 3D Kerf Technology

Better traction, increased mileage and controlled wearing with less irregular wear.



G Innovative mixing system

Optimized tread volume for increased mileage and specifically formulated tread compound that provides exceptional tread wear.



Greater molecular weight by minimizing breakdown of polymer chain. Increased strength and decreased heat generation. Longer mileage and improved fuel efficiency.

