



AL21 APPROVED FOR SMARTWAY & CARB Long-Haul "Smartec" Series



Tire Structure

Belt structure

Minimized motion of belts for reduced heat generation.

Wide belt

Wide #4 Belt to increase the casing life.

Enriched belts

Enriched belts ensure the stability of the footprint.

Carcass

Optimized carcass structure for better ride and handling.



Improved bead

Optimized bead profile for superior retreadability.

Sizes & Specifications

AL21

S-Code	Size	Ply Rating	Type	Measuring Rim	Max. Air (PSI)		Max. Load (LBS)		Overall Diameter (inch)	Section Width (inch)	Tread Width (inch)	Tread Depth (32nds)	Revs /Mile	SLR (inch)	Max Speed (MPH)	Weight (lbs)
					S	D	S	D								
3003108	11R22.5	14	T/L	8.25	105	105	6,175	5,840	41.5	11.3	8.1	19	499	19.3	75	124.6
3003109	11R22.5	16	T/L	8.25	120	120	6,610	6,005	41.5	11.3	8.1	19	499	19.3	75	124.6
3003110	11R24.5	14	T/L	8.25	105	105	6,610	6,005	43.5	11.3	8.1	19	476	20.3	75	131.0
3003111	11R24.5	16	T/L	8.25	120	120	7,160	6,610	43.5	11.3	8.1	19	476	20.3	75	131.0
3003112	285/75R24.5	14	T/L	8.25	110	110	6,175	5,675	41.5	11.0	8.1	19	499	19.4	75	124.3
3003113	285/75R24.5	16	T/L	8.25	120	120	6,780	6,175	41.5	11.0	8.1	19	499	19.4	75	124.3
3002431	295/75R22.5	14	T/L	9.00	110	110	6,175	5,675	40.2	11.7	8.5	19	519	18.8	75	118.4

* Technical data subject to change without prior notice.

Recommended Vehicle Types and Position



⊙ Recommended position

Long-Haul "Smartec" Series



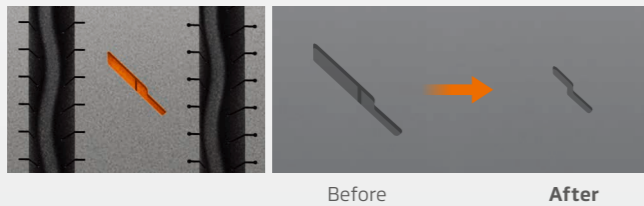
Experience Smartec
 Newly launched 'Smartec' is an integrated package of Hankook truck and bus tire technology. Smartec is based on five main tire performance factors featuring safety, mileage, anti chip & cut, retreadability, and traction. The technology provides a range of benefits that consumers identify as a key factor when selecting tires. Smartec is applied to the entire research, development and manufacturing process for all products.

Significant Design Features

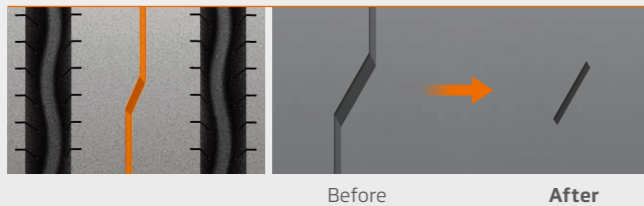
Optimized Kerf

Optimized lateral kerf and semi-groove kerf provides better traction and enhances even wear for superior performance.

Lateral Kerf

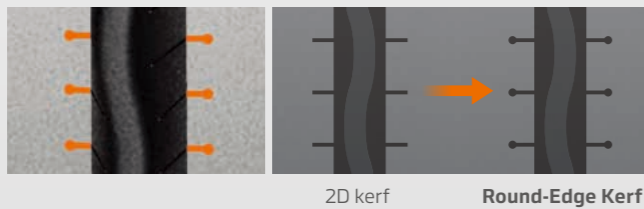


Semi-Groove & Kerf



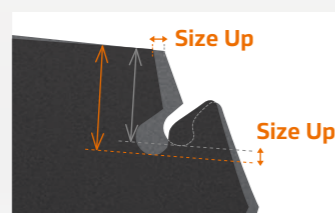
Round-Edge Kerf

Rounded shape at the edge of the kerf prevents tearing and cracking.



Innovative Side Decoupling Groove

Prevents uneven wear by reducing movement between sidewall and shoulder.



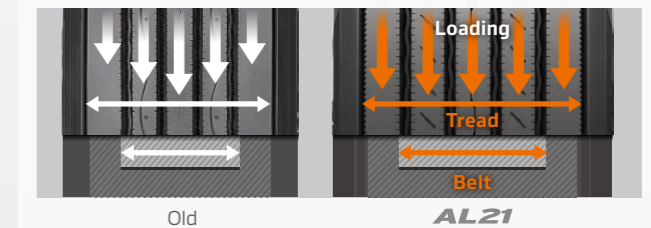
■ Old
 ■ AL21



Technology and Benefits

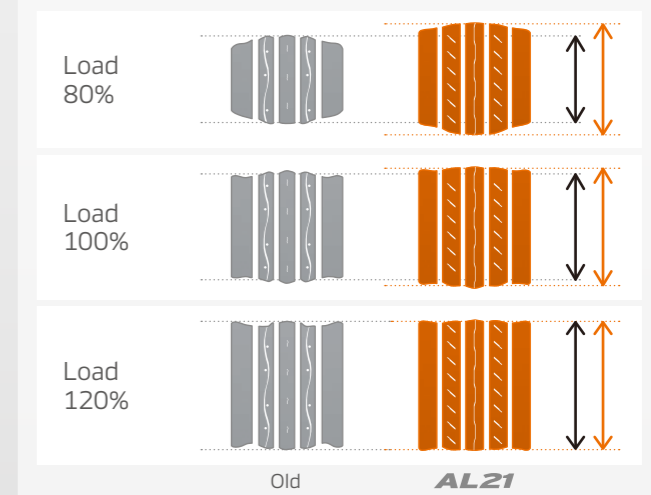
Improved Grip Force

Expanded belt provides equal road grip which results in even wear and better performance.



Consistent Footprint

AL21 has a stabilized footprint which provides longer mileage by decreasing uneven wear.



Test Results

