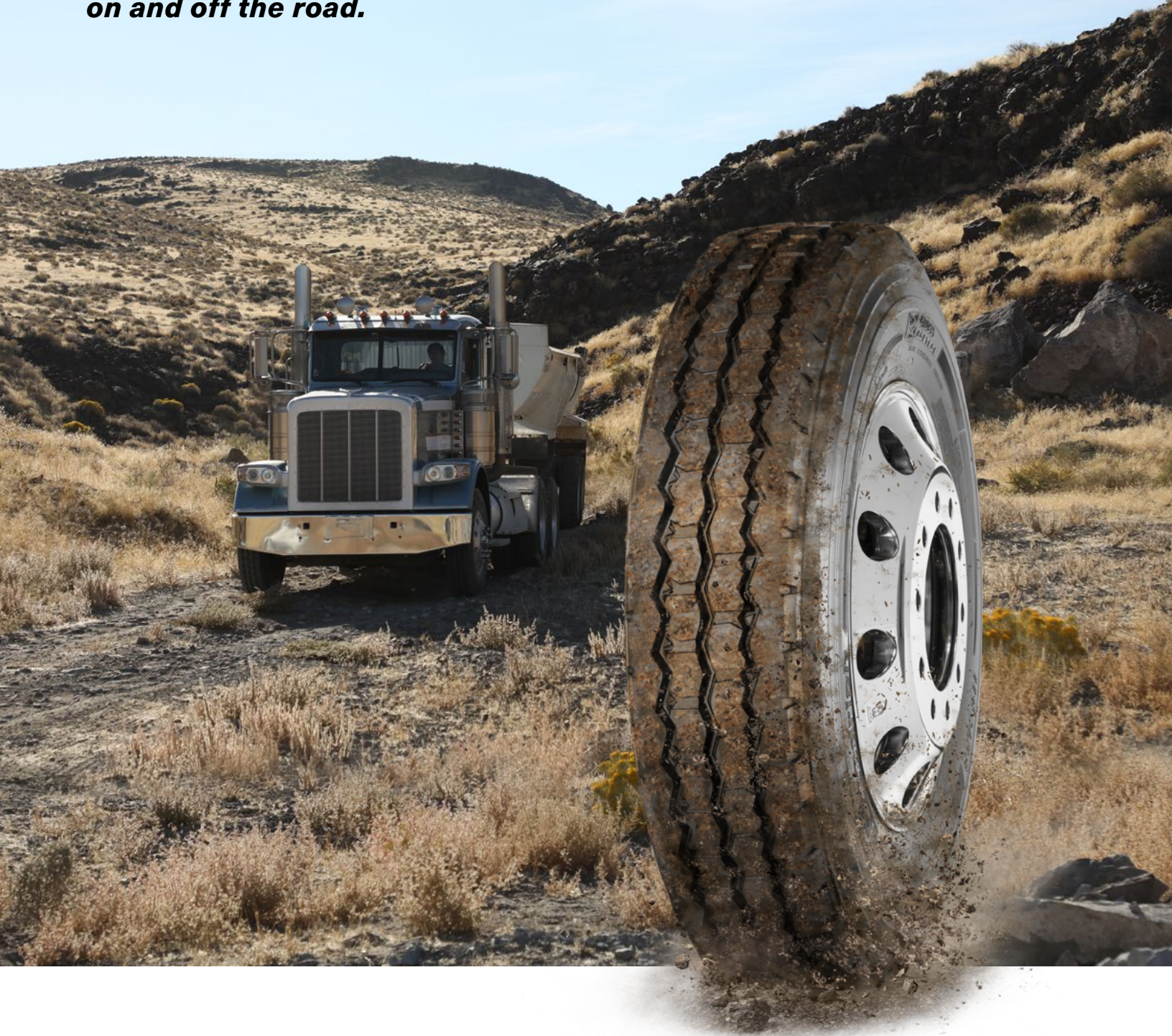


BFGoodrich® CROSS CONTROL® S

All-terrain steer/all position tire designed to provide superior traction and durability to get you through the toughest jobs on and off the road.



www.BFGoodrichTruckTires.com

BFGoodrich®
Tires

BFGoodrich® CROSS CONTROL® S

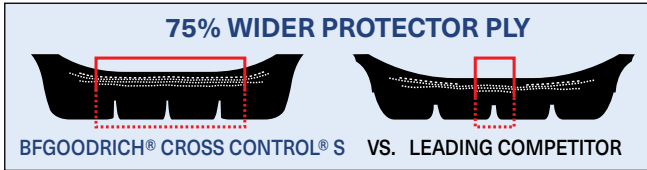


DOWNTIME – FIGHTING DURABILITY

BFGoodrich® tires are built to work as hard as you. Each on/off road tire is constructed with a specially designed casing to protect against the grueling day-to-day environments that you encounter so that you can get the job done on time.

COMBAT DAMAGE AND DOWNTIME

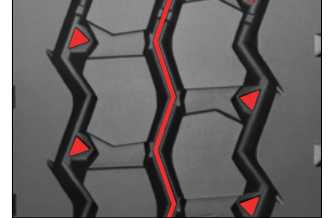
- **Full Coverage Protector Ply** – 75% wider than a leading competitor⁽¹⁾ to provide protection from penetrations and road hazards even past the outer grooves.



- **Anti-cut & chip resistance** fights against aggressions to the tread that could take your tire out of service prematurely.
- **Thick sidewalls** to fight impacts and abrasions.

CASING INTEGRITY & RETREADABILITY

- **Groove Bottom protectors** help reduce stone drilling, protecting your casing integrity and retreadability.



- **Heat Release Compounds** designed to fight heat build up in tires keeping your casing running cool in the toughest conditions.



GO THE DISTANCE

Guaranteed to provide 20% more mileage on the wide based BFGoodrich® Cross Control® S tire than the BFGoodrich® ST565™ Wide Base tire.⁽⁴⁾



TRACTION YOU CAN TRUST

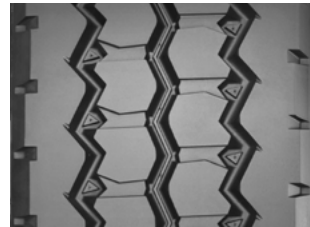
SERRATED SHOULDER

Staggered rib blocks to help you get through the most grueling jobs while maintaining maneuverability in soft soil and snow conditions.

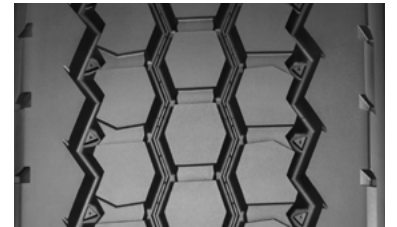


AGGRESSIVE RIBBED DESIGN

This aggressive rib design gives you the traction you need in punishing conditions without sacrificing handling or ride comfort.



Standard Sizes



Wide Base Sizes

Size	Load Range	Catalog Number	Tread Depth 32nds	Max. Speed (2) mph	Loaded Radius		Overall Diameter		Overall Width (3)		Approved Wheels (Measuring wheel listed first)		Min. Dual Spacing (3)		Revs Per Mile	Max. Load Per Tire Single				Max. Load Per Tire Dual			
					in.	mm.	in.	mm.	in.	mm.	in.	mm.	in.	mm.		lbs.	psi	kg.	kPa	lbs.	psi	kg.	kPa
11R22.5	H	03117	21	65	19.5	495	41.6	1056	11.2	284	8.25, 7.50	12.5	318	497	6940	123	3150	850	6395	123	2900	850	
11R24.5	H	36251	21	65	20.5	520	43.6	1107	11.3	288	8.25, 7.50	12.5	318	479	7160	120	3250	830	6610	120	3000	830	
315/80R22.5 ⁽⁶⁾	L	97643	21	68	19.8	502	42.6	1081	12.6	321	9.00, 9.75	13.8	351	488	9090	130	4125	900	8270	130	3750	900	
385/65R22.5 ^(4,5)	J	53214	21	65	19.7	500	42.3	1075	14.8	377	11.75, 12.25	–	–	499	9370	123	4250	850	–	–	–	–	
425/65R22.5 ^(4,5)	L	19321	20	65	20.5	520	44.4	1128	16.5	420	13.00, 12.25	–	–	469	11400	120	5150	825	–	–	–	–	

Note: Wheel listed first is the measuring wheel.

(1) Protector ply width compared to the Yokohama MY507 in size 11R24.5 LRH. Actual results may vary.

(2) Exceeding the lawful speed limit is neither recommended nor endorsed.

(3) Tire section widths and overall widths will change 0.1 inch (2.5 mm) for each 1/4 inch change in wheel width. Minimum dual spacing should be adjusted accordingly.

(4) BFGoodrich® Cross Control® S Wide Base tires.

(5) Available 2nd Quarter 2018.

(6) Not approved for use with an 8.25 wheel.

BFGoodrich® tires are subject to a continuous development program. BFGoodrich® Commercial Truck Tires reserves the right to change product specifications at any time without notice or obligation.

Application	Highway	Regional	Urban	Coach/Bus	On/Off-Road
Position	Steer	Drive	Trailer		

■ Recommended Application ■ Acceptable Application

» Take control today at BFGoodrichTruckTires.com

To Find Your Nearest BFGoodrich® Commercial Truck Tire Dealer Call:
 United States, 1-877-788-8899; Canada, 1-888-871-6666; Mexico, 011-52-442-296-1600
 or visit www.bfgoodrichtrucktires.com
 Copyright © 2018 MNA, Inc. All rights reserved. (02/18)