

DH07

Structurally designed for improved durability, ride, and handling performance

Belt structure
Minimized motion of belts for reduced heat generation.

Carcass
Optimized carcass structure for better ride and handling.

Improved bead
Optimized bead profile for superior retreadability.



DH07

Optimized design for regional haul pick-up & delivery drive position

Sizes & specifications

DH07

S-Code	Size	Ply Rating	Type	Measuring Rim	Max.Air (PSI)		Max.Load (LBS)		Overall Diameter	Section Width	Tread Width	Tread Depth	Revs/ Mile	SLR (inch)	Max Speed	Weight (lbs)
					S	D	S	D								
3001929	225/70R19.5	14	T/L	6.75	110	110	3,970	3,750	32.4	8.8	7.2	18	643	15.1	75	68
3002314	245/70R19.5	16	T/L	6.75	120	120	4,805	4,540	33.5	9.4	8.1	19	621	15.5	75	76
3002313	265/70R19.5	14	T/L	7.50	110	110	6,080	4,675	34.5	10.2	8.7	20	604	16.1	75	88

• Tire construction and material specifications subject to change without notice or obligation.

Recommended / Available vehicle & position



● Recommended position



Optimized design for regional haul pick-up & delivery drive position



Kontrol Technology is Hankook Tire's technology philosophy which reflects how the tire should perfectly control the interaction between the driver, the vehicle and the road while in motion. It is implemented to ensure Hankook Tire provides the greatest benefits and driving experiences to customers in terms of safety, driving comfort, handling, performance and environmental friendliness. The DH07 is a tire that embodies Kontrol Technology.

Pattern concept



Wider 3 channel zigzag groove
Wider grooves prevent stone drilling & the tread design provides self cleaning.



Stone ejector
Stone ejector technology prevents stone drilling and tire tearing.

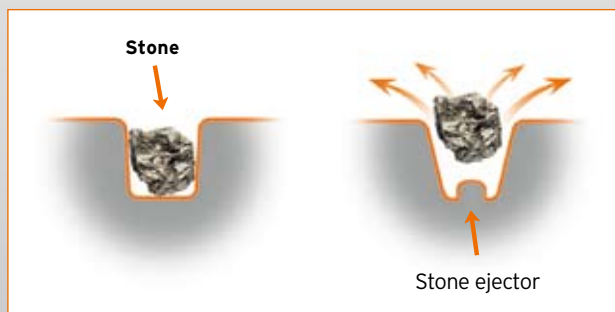


Optimized shoulder design
Unique shoulder block & lug design protects against cracking from external shocks.



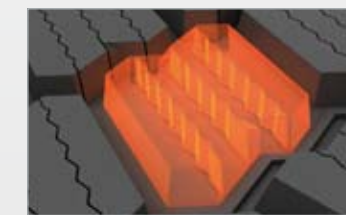
Multiple 3-dimensional kerf design
Provides longer mileage and maximum traction.

Stone ejector

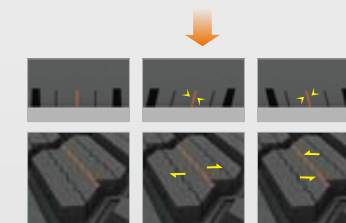


Multi 3D kerf technology

Lateral / tangential zigzag-type full-depth kerfs generate binding forces between blocks



3D kerf
Lateral / tangential direction.
Zigzag type :
Applying full depth kerfs helps maintain a binding force between blocks.



Controlled wear and tear
→ Improves mileage.

Full depth kerf applied
→ Improves traction during the whole life of the tire.

Test result

