



DH37

Regional Tire for Extreme Mileage & Fuel Efficiency

Approved for SmartWay & CARB



DH37

Regional Haul Drive Tire for Extreme Mileage & Traction

Belt structure

Minimized motion of belts allows for reduced heat generation.

Carcass

Optimized carcass structure allows for better ride and handling.



Improved bead

Optimized bead profile allows for superior retreadability.

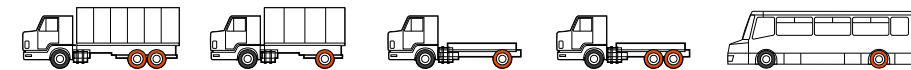
Sizes & Specifications

DH37

S-code	Size	Ply Rating	Type	Measuring Rim	Max Air (psi)		Max Load (lbs)		Overall Diameter (inch)	Section Width (inch)	Tread Width (inch)	Tread Depth (inch/32 ^{nds})	Revs /Mile	SLR (inch)	Max Speed	Weight (lbs)
					S	D	S	D								
3002164	11R22.5	14	T/L	8.25	105	105	6,175	5,840	41.9	11.1	8.7	26	483	19.7	75	130
3002165	11R22.5	16	T/L	8.25	120	120	6,610	6,005	41.9	11.1	8.7	26	483	19.7	75	130
3002490	11R24.5	14	T/L	8.25	105	105	6,610	6,005	44.0	11.1	8.7	26	459	20.6	75	138
3002491	11R24.5	16	T/L	8.25	120	120	7,160	6,610	44.0	11.1	8.7	26	459	20.6	75	138
3002493	295/75R22.5	14	T/L	8.25	110	110	6,175	5,675	40.7	11.5	8.7	26	496	19.0	75	124
3002494	285/75R24.5	14	T/L	8.25	110	110	6,175	5,675	41.7	11.3	8.7	26	485	19.7	75	132

* Tire construction and material specifications subject to change without notice or obligation.

Recommended Vehicle Types & Position



Recommended position

hankooktire.com/us



Hankook Tire America Headquarters

333 Commerce Street, Nashville, Suite 600, Tennessee 37201, USA
Tel : 1-800-HANKOOK, Fax : 1-800-TIRES-OK

DH37

Regional Tire for Extreme Mileage & Fuel Efficiency

Regional Haul Drive Tire for Extreme Mileage & Traction



Significant Design Features

A Rib and block type tread design



Combination of rib and block type tread design and 3D kerf provides better traction, increased mileage and reduced irregular wear.

B Optimized shoulder design



Semi-open shoulder lug provides excellent traction in variable road conditions.

C Zigzag traction groove



4 channel zigzag groove improves traction and braking performance.

D Tie-bar



Increased block stiffness provides better handling performance.

E Unique kerf design



Highlights tread block's improved traction performance.

F Deep tread depth

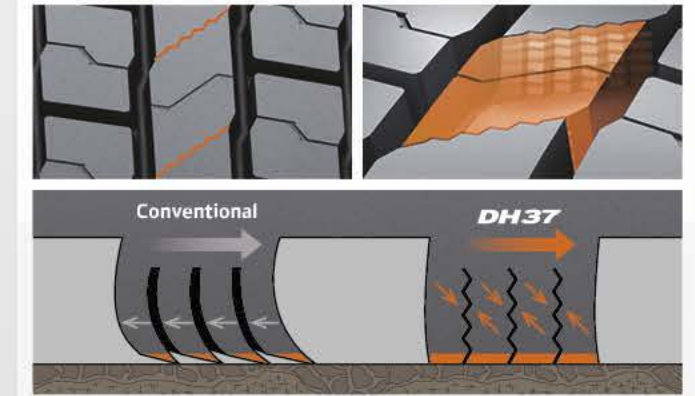
26/32nd tread depth for long life and great traction performance.



Technology and Benefits

G 3D Kerf Technology

Better traction, increased mileage, and controlled wearing with less irregular wear.



H Innovative mixing system

Optimized tread volume for increased mileage and specifically formulated tread compound that provides exceptional tread wear.



Greater molecular weight by minimizing breakdown of polymer chain. Increased strength and decreased heat generation. Longer mileage and improved fuel efficiency.

