

# BFGoodrich® ROUTE CONTROL® D

Drive tire designed for grip in all weather conditions and durability for the toughest of regional and city routes to maximize your uptime and help keep your delivery commitments.



## Application

Highway	Regional	Urban	Coach/Bus	On/Off-Road

## Position

Steer	Drive	Trailer

## All Weather Tire



## Wear Life



## Durability



## Fitments



■ Recommended Application   ■ Acceptable Application



# BFGoodrich® ROUTE CONTROL® D

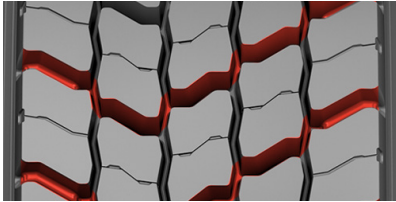
Regional drive tire designed to provide grip in all weather conditions and long, even wear while taking on the toughest of regional and city routes, to maximize your uptime and help keep your delivery commitments.



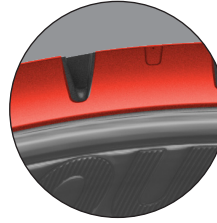
## ALL WEATHER GRIP

Designed to deliver driver approved traction in rain, snow, or over curbs

- The BFGoodrich® Route Control® D has more than 10% better wet traction <sup>(1,2)</sup> than a leading competitor.
- The BFGoodrich® Route Control® D tire delivers 13% better snow traction than a leading competitor tire. <sup>(3)</sup>



Three Peak Mountain Snowflake, 3PMSF, rated winter traction <sup>(4)</sup>



- Open Shoulder design provides ability to grip onto any surface while maximizing self cleaning
- Directional tread pattern ensure optimal cleaning, water evacuation, and better ability to dig for improved traction in all weather conditions

← Directional tread

## GUARANTEED TO DELIVER. RAIN, SNOW OR OVER CURBS.

### SIX MONTH ROAD TEST GUARANTEE\*

If you're not completely satisfied with the BFGoodrich® Route Control® D tire in the first six months of use or before 50% of its usable tread life—which ever comes first—we will reimburse 50% of your acquisition price per tire.\*



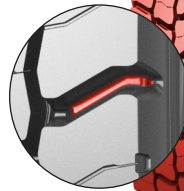
\* Please see BFGoodrichTruckTires.com > Reference Manuals > Warranties/Guarantees for details.



## LONG TREAD LIFE

Expect long tread life and exceptional, even-wear performance

- Advanced compounding enables superior performance in the demanding high scrub regional environment
- Block bridges allow for open shoulder traction while helping to minimizing irregular wear



## DURABILITY

Legendary BFGoodrich® Casing technology provides durability to provide maximum uptime and Retreadability to help improve the fleet's bottom line

**5 YEAR** <sup>(5)</sup>

5 Year / 2-Retread Manufacturer's Limited Casing Guarantee



Size	Load Range	Catalog Number	Tread Depth 32nds	Max. Speed (6)		Loaded Radius		Overall Diameter		Overall Width (7)		Approved Wheels (Measuring wheel listed first)		Min. Dual Spacing (6)		Revs Per Mile	Max. Load Per Tire Single				Max. Load Per Tire Dual			
				mph	km/h	in.	mm.	in.	mm.	in.	mm.	in.	mm.	in.	mm.		lbs.	psi	kg.	kPa	lbs.	psi	kg.	kPa
11R22.5	H	94556	26	75	120	19.5	496	41.7	1060	11.2	285	8.25, 7.50	12.5	318	495	6610	120	3000	830	6005	120	2725	830	
275/80R22.5	G	06136	26	75	120	18.6	472	39.9	1013	10.9	278	8.25, 7.50	12.2	311	519	6175	110	2800	760	5675	110	2575	760	
11R24.5	H	47051	26	75	120	20.5	520	43.9	1110	11.3	287	8.25, 7.50	12.5	318	473	7160	120	3250	830	6610	120	3000	830	

Note: Wheel listed first is the measuring wheel.

(1) Based on internal wet braking test at 97 kph (60 mph) on asphalt measuring peak MU, using BFGoodrich® Route Control® D tire in size 275/80R22.5 and Firestone® FS663 tire in size 295/75R22.5 (equivalent tire sizes). Actual on-road results may vary.

(2) Based on internal wet starting test at 10 kph (6 mph) measuring peak MU, using BFGoodrich® Route Control® D tire in size 275/80R22.5, BFGoodrich® DR444 tire in size 275/80R22.5 and Firestone® FS663 tire in size 295/75R22.5 (equivalent tire sizes). Actual on-road results may vary.

(3) Based on internal snow traction test measuring the distance traveled in a set amount of time from a full stop position, using BFGoodrich® Route Control® D tire in size 11R24.5 and Firestone® FS663® tire in size 11R24.5. Actual on-road results may vary.

(4) Meets the USTMA (U.S. Tire Manufacturers Association) snow traction performance requirements. Meets the Tire and Rubber Association of Canada (TRAC) requirements for severe snow traction.

(5) 5 Year / 2-Retread Limited Casing Guarantee when retreaded by an authorized Michelin Retread Technologies (MRT) Dealer or an Oliver Retread dealer.

(6) Exceeding the lawful speed limit is neither recommended nor endorsed.

(7) Tire section widths and overall widths will change 0.1 inch (2.5 mm) for each 1/4 inch change in wheel width. Minimum dual spacing should be adjusted accordingly.

BFGoodrich® tires are subject to a continuous development program. BFGoodrich® Commercial Truck Tires reserves the right to change product specifications at any time without notice or obligation.

MNA, Inc. continually updates its product information to reflect any changes in Industry Standards. Printed material may not reflect the current Load and Inflation information. Please visit [www.bfgoodrichtrucktires.com](http://www.bfgoodrichtrucktires.com) for the latest product information. The actual load and inflation pressure used must not exceed the wheel manufacturer's maximum conditions. Never exceed a wheel manufacturer's limits without permission from the component manufacturer.

Application	Highway	Regional	Urban	Coach/Bus	On/Off-Road

Position	Steer	Drive	Trailer

■ Recommended Application    ■ Acceptable Application

» Take control today at [BFGoodrichTruckTires.com](http://BFGoodrichTruckTires.com)

To Find Your Nearest BFGoodrich® Commercial Truck Tire Dealer Call:

United States, 1-877-788-8899; Canada, 1-888-871-6666

or visit [www.bfgoodrichtrucktires.com](http://www.bfgoodrichtrucktires.com)

© 2020 MNA, Inc. All rights reserved. (03/20)

© 2020 MNA(C)I All rights reserved. (03/20)