

# MICHELIN<sup>®</sup> X<sup>®</sup> LINE<sup>™</sup> ENERGY T TIRE



SmartWay<sup>®</sup> fuel efficiency<sup>(1)</sup> with excellent mileage and casing durability in a trailer tire designed specifically for line haul applications.

SmartWay<sup>®</sup>  
Verified

(1) Based on industry standard rolling resistance testing of comparable tires or retreads. Actual results may vary, and may be impacted by many factors, to include road conditions, weather and environment, driver performance, etc.



# MICHELIN® X® LINE™ ENERGY T TIRE



LINE HAUL APPLICATIONS

SmartWay® fuel efficiency<sup>(1)</sup> with excellent mileage and casing durability in a trailer tire designed specifically for line haul applications.

## Improved Fuel Efficiency<sup>(2)</sup>

10% Improved rolling resistance. <sup>(2)</sup>

### • Advanced Technology™ Compound

Next generation compounding offers low rolling resistance with no compromise in wet traction, mileage, durability and even wear.

## Excellent Tread Life

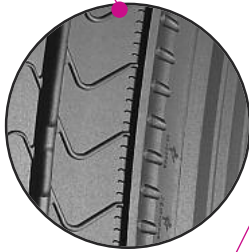
Excellent wear resistance.

### • Solid tread sculpture

Optimized contact patch for excellent wear resistance.

### • Shoulder groove

Resists irregular wear.



## Maximum Retreadability

### 3-Retread Limited Warranty<sup>(3)</sup>

Fight casing fatigue:

### • Curb guard

Sidewall and shoulder protection.

### • Enhanced Inner Liner

Delivers extra durability.

### • Robust Bead Area

Reduced mounting and demounting damage.

### • Rectangular Bead Bundle

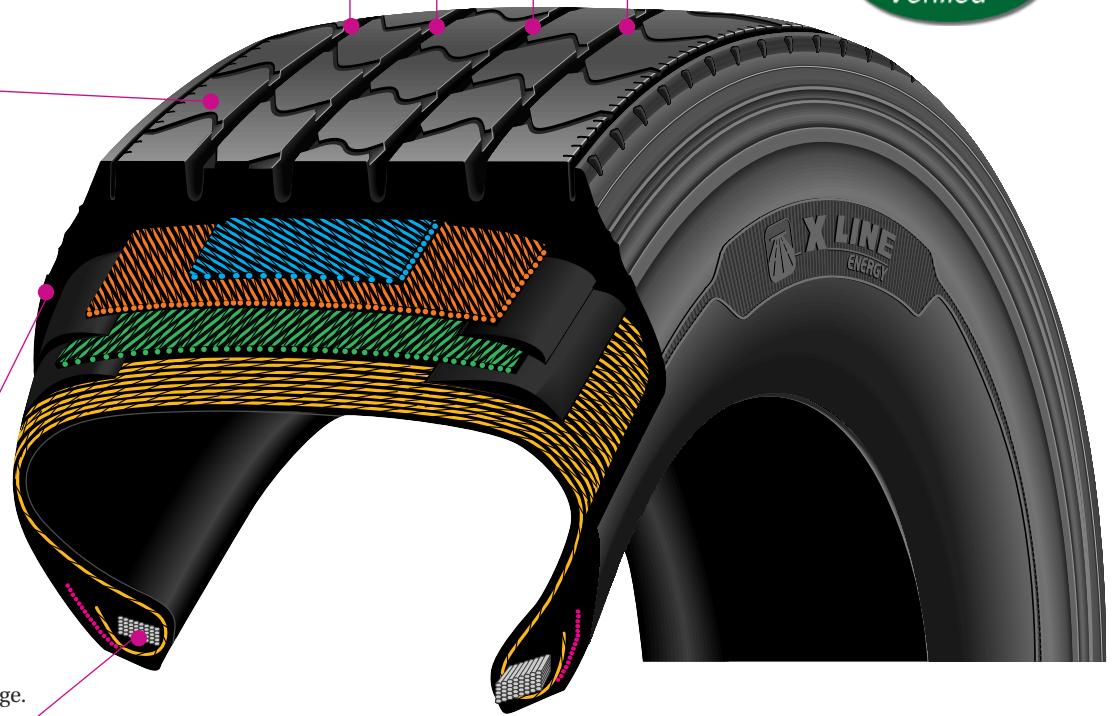
A Michelin exclusive - simulates a solid steel rod “strapping” the tire onto the wheel. This design stabilizes the entire bead region and minimizes fatigue in order to extend casing life.

## Exceptional Handling

Optimized traction and stability.

### • 4 circumferential grooves

Excellent water evacuation.



Size	Load Range	Catalog Number	Tread Depth 32nds	Max. Speed (*)	Loaded Radius		Overall Diameter		Overall Width (‡)		Approved Wheels (Measuring wheel listed first.)	Min. Dual Spacing (‡)		Revs Per Mile	Max. Load and Pressure Single				Max. Load and Pressure Dual			
					in.	mm	in.	mm	in.	mm		in.	mm		in.	mm	lbs.	psi	kg.	kPa	lbs.	psi
11R22.5 <sup>(3)</sup>	G	92005	12	75	19.1	485	40.9	1039	11.2	285	8.25, 7.50	12.5	318	493	6175	105	2800	720	5840	105	2650	720
275/80R22.5 <sup>(3)</sup>	G	92052	12	75	18.4	468	39.7	1008	11.1	281	8.25, 7.50	12.2	311	523	6175	110	2800	760	5675	110	2575	760
11R24.5 <sup>(3)</sup>	H	92448	12	75	20.0	508	43.0	1092	11.1	283	8.25, 7.50	12.5	318	482	7160	120	3250	830	6610	120	3000	830
275/80R24.5 <sup>(3)</sup>	G	92981	12	75	19.1	485	40.8	1036	10.8	274	8.25, 7.50	12.2	311	507	6175	110	2800	760	5675	110	2575	760

Note: Wheel listed first is the measuring wheel.

(1) Based on industry standard rolling resistance testing of comparable tires or retreads. Actual results may vary, and may be impacted by many factors, to include road conditions, weather and environment, driver performance, etc.

(2) Compared to MICHELIN® XT-1® tire.

(\*) Exceeding the lawful speed limit is neither recommended nor endorsed.

(‡) Overall widths will change 0.1 inch (2.5 mm) for each 1/4 inch change in wheel width. Minimum dual spacing should be adjusted accordingly.

MICHELIN® tires and tubes are subject to a continuous development program. Michelin North America, Inc. reserves the right to change product specifications at any time without notice or obligations.

Please consult wheel manufacturer's load and inflation limits. Never exceed wheel manufacturer's limits without permission of component manufacturer.

[www.michelintruck.com](http://www.michelintruck.com)

### United States

**Michelin North America, Inc.**  
One Parkway South  
Greenville, SC 29615  
1-888-622-2306

### Canada

**Michelin North America (Canada), Inc.**  
2500 Daniel Johnson, Suite 500  
Laval, Quebec H7T 2P6  
1-888-871-4444

### Mexico

**Industrias Michelin, S.A. de C.V.**  
Av. 5 de febrero No. 2113-A  
Fracc. Industrial Benito Juarez  
7 6120, Querétaro, Qro. Mexico  
011 52 442 296 1600