



LINE HAUL APPLICATIONS

THE MICHELIN® X® LINE™ ENERGY Z COACH

Improved fuel-efficient⁽¹⁾, all position service in long distance applications such as Highway Coach.⁽²⁾

Line Haul	Regional	Urban	On/Off Road
<input checked="" type="checkbox"/> Recommended	<input type="checkbox"/> Acceptable	<input type="checkbox"/> Acceptable	<input type="checkbox"/> Acceptable



- (1) Based on industry standard rolling resistance testing of comparable tires or retreads. Actual results may vary, and may be impacted by many factors, to include road conditions, weather and environment, driver performance, etc.
- (2) "No bus shall be operated with regrooved, recapped or retreaded tires on the front wheels." US Code of Federal Regulations: Title 49, Transportation; Part 393.75.



THE MICHELIN® X® LINE™ ENERGY Z COACH

Improved fuel-efficient⁽¹⁾, all position service in long distance applications such as Highway Coach.⁽²⁾

Improved Fuel Economy

The MICHELIN® X® LINE™ ENERGY Z tire new tread compound generated a 7% reduction in rolling resistance versus the MICHELIN® XZA®2 ENERGY 315/80R22.5⁽³⁾ tire.

Excellent Tread Life

- **Groove Wall Miniature Sipes** – Helps fight irregular wear to improve mileage

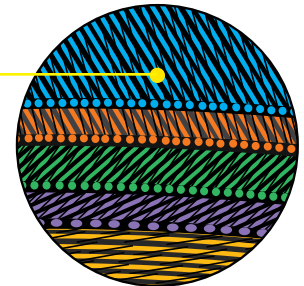
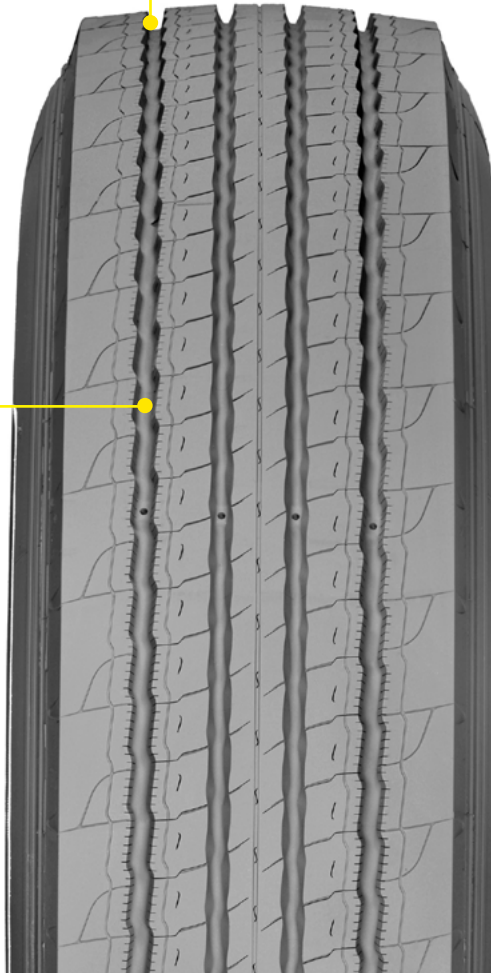
Great Traction & Handling

- **Increased Net Contact Area** – 3% greater contact area versus the MICHELIN® XZA®2 ENERGY tire meaning more rubber on the road
- **Zig-Zag Grooves** – Improves traction in new and worn tire conditions

Extended Casing Life

Long life and retreadability

- **Full Width Elastic Protector Ply** – Helps protect against penetrations, impacts breaks, and shocks for maximum casing durability.



Line Haul	Regional	Urban	On/Off Road
Recommended	Recommended	Acceptable	Acceptable

Size	Load Range	Catalog Number	Tread Depth 32nds	Max. Speed (*) mph	Loaded Radius		Overall Diameter		Overall Width (‡)		Approved Wheels (Measuring wheel listed first.)	Min. Dual Spacing (‡)		Revs Per Mile	Max. Load and Pressure Single				Max. Load and Pressure Dual			
					in.	mm	in.	mm	in.	mm		in.	mm		lbs.	psi	kg.	kPa	lbs.	psi	kg.	kPa
315/80R22.5 ⁽³⁾	L	09807	17	75	19.6	497	42.3	1075	12.4	315	9.00, 9.75	13.8	351	491	9090	130	4125	900	8270	130	3750	900

(1) Based on industry standard rolling resistance testing of comparable tires or retreads. Actual results may vary, and may be impacted by many factors, to include road conditions, weather and environment, driver performance, etc.

(2) "No bus shall be operated with regrooved, recapped or retreaded tires on the front wheels." US Code of Federal Regulations: Title 49, Transportation; Part 393.75.

(3) Not approved for use with an 8.25 wheel.

(*) Exceeding the lawful speed limit is neither recommended nor endorsed.

(‡) Overall width will change 0.1 inch (2.5 mm) for each 1/4 inch change in wheel width. Minimum dual spacing should be adjusted accordingly.

MICHELIN® tires and tubes are subject to a continuous development program. Michelin North America, Inc. reserves the right to change product specifications at any time without notice or obligations.

Please consult wheel manufacturer's load and inflation limits. Never exceed wheel manufacturer's limits without permission of component manufacturer.

TO FIND OUT MORE
michelintruck.com

FIND US ON FACEBOOK
michelintruck.com

CONTACT US BY EMAIL
michelintruck.com/contact-us/

CONTACT US BY TELEPHONE
1-888-622-2306